



SpectrAlert[®] Advance
Audible Visible
Full-Line Catalog

 **SYSTEM
SENSOR[®]**
advanced ideas. advanced solutions.™



Simple to install, yet **powerful** enough to meet any requirement.

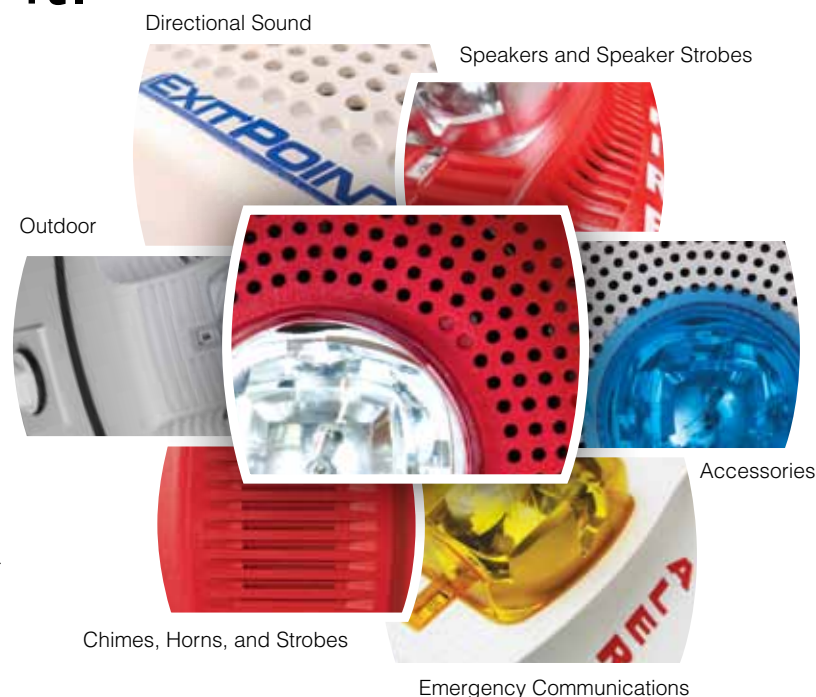
Fire, emergency communications, mass notification, general signaling, and voice evacuation systems all provide opportunities for growth. But to grow your business in this market, you need an audible visible (AV) line simple enough to install quickly in large installations, yet powerful enough to meet any application requirement.

SpectrAlert® Advance does just that.

The only AV products with plug-in designs, aesthetic and functional consistency, and field-adjustable settings across the entire line, SpectrAlert Advance enables you to meet the widest range of notification requirements and specifications in the industry.

With SpectrAlert Advance, you can take on any project with confidence, knowing you can meet requirements while maximizing the efficiencies of using a single product line. Whether for massive emergency communications projects, small notification systems, or anything in between, SpectrAlert Advance products, tools, and accessories simplify the entire user experience – from planning and selection to training, installation and maintenance – saving you time and money while protecting the lives of your customers.

See inside why SpectrAlert Advance is the market leader in AV notification.





HERMELA

We offer a **complete** AV line that meets your every need.

If you specify SpectrAlert® Advance, you'll benefit from the simplicity that comes with the widest and most consistent line of AV notification appliances in the industry. SpectrAlert Advance includes a full range of indoor, outdoor, wall, and ceiling products for a wide variety of notification projects. Common features across the line include field-selectable candela settings, plug-in designs, rotary code switches, universal mounting plates, and the same current draw on wall- and ceiling-mount devices.

These attractive devices are designed with the architect in mind. All SpectrAlert Advance devices have the same family look and can be interchanged seamlessly within a building. Unique accessories, like the weatherproof mounting plate, make outdoor devices blend with any exterior façade.

The breadth and consistency of the SpectrAlert Advance line are further enhanced by features that increase versatility. For example, plain models can be customized with field-applied decals and color lens strobe attachments for a variety of applications.

System Sensor also provides tools that simplify the specification of code-compliant systems. You can learn more about these tools at systemsensor.com/tools.

Versatile Devices Fit Any Application or Market

SpectrAlert Advance provides the versatility that specifiers need to meet requirements for a range of notification applications – from fire to mass notification to general signaling – using a single, uniform line of products.

Our field-applied decals (AGENT, EVAC, ALERT, FIRE) customize any plain AV device for unique applications. Used in conjunction with our color lenses (amber, red, blue, green), they can turn any strobe into an ECS, general signaling, weather warning, or agent release notification appliance with no light derating. That means the SpectrAlert Advance line makes it easy for you to expand your business into markets beyond fire.





Easily meet requirements with cost-effective design.

A high-quality notification system design serves as the foundation for any project, helping to guide installation and ensure relevant codes are met. SpectrAlert® Advance products and tools help make the design process cost-effective and efficient, so you can win bids and ultimately save time and money on the entire project.

First, SpectrAlert Advance products and accessories provide the breadth and versatility for you to meet virtually any requirement for indoor, outdoor, wall, or ceiling applications with a single, cohesive family of products.

In addition, a code-compliant AV system has many upfront calculations or requirements that can be complicated and time-consuming, such as calculating voltage drop on a circuit or obtaining documentation that needs to be included in a job file. System Sensor provides several online tools and software that can greatly simplify these processes.

Free Design Tools and Learning Resources

SpectrAlert Advance isn't just a line of notification appliances, it also includes a variety of free design tools and learning resources to help you efficiently design notification systems that meet code and save lives.

When designing a notification system, there are several tasks and calculations that can be tedious and time-consuming. System Sensor assists in this process by providing tools online at systemsensor.com/tools. Here, you can access free tools, such as the Voltage Drop Calculator and Mounting Options Tool, to simplify system design and product selection.

Other useful resources include the CAD download page at systemsensor.com/cad and the Engineering Specifications page at systemsensor.com/engspecs. These pages enable you to quickly download CAD files or engineering specifications for any System Sensor product.

If it's training you're looking for, System Sensor online training, live and archived webinars, and seminars provide the latest information on meeting code and application requirements. These training resources can be accessed at systemsensor.com/training.

Finally, System Sensor provides several guides, case studies and white papers that include best practices on specific notification system applications.

All System Sensor design tools and learning resources can be accessed on our Web site at systemsensor.com/prodlibrary.





Reduce the time and cost of installation and maintenance.

If you install notification systems, SpectrAlert® Advance greatly reduces the time and expense associated with installation, configuration and maintenance. That means you can win more bids, increase your margins, and take on more projects.

For example, SpectrAlert Advance provides aesthetic and functional consistency across its entire range of AV devices. Whether your project requires indoor, outdoor, wall, or ceiling appliances, you only need to learn one uniform product line. This approach reduces required training as well as potential confusion in the field.

Common SpectrAlert Advance features provide benefits beyond uniformity; they also provide exceptional time and cost benefits for your projects. First, all devices provide field-selectable settings and use a universal mounting plate for both wall and ceiling applications. The mounting plate is further enhanced with an onboard shorting spring that ensures wiring continuity before devices are installed, so you can verify that the loop is properly wired without mounting the devices and exposing them to potential construction damage.

Once the plates are mounted, all devices, including speakers and speaker strobes, utilize a plug-in design with a single captured screw to speed installation and virtually eliminate costly ground faults from crushed or pinched wires. In addition, if a device is damaged and needs to be replaced or its settings reconfigured, technicians simply loosen a single screw and unplug the device for replacement or adjustment.

Simple Installation Across the Entire Line

Whatever type of notification devices your project requires, SpectrAlert Advance provides a quick, easy, and uniform installation experience. Take our outdoor appliances. While this is the most extensive line of outdoor notification devices available, it maintains the look and feel of our indoor devices and all of the installation benefits – benefits that include mounting plates with onboard shorting springs, plug-in designs across the entire line (including speakers), and a preliminary snap-in feature with a single captured screw for quick and efficient device mounting.

SpectrAlert Advance outdoor devices also includes installation benefits designed specifically for outside environments. For example, NEMA 3R-rated weatherproof plates (WTP) make attractive watertight flush mounting to a variety of outdoor surfaces quick and easy. New plastic used on outdoor devices resist UV-induced fading longer than most devices on the market, so you don't have to sacrifice looks to meet safety requirements.

Finally, lightweight NEMA 4X-rated plastic weatherproof back boxes now ship with all outdoor devices to make for an easier installation. These new materials protect against corrosion and, like the device plastic, resist UV-induced fading. With removable mounting ears, these back boxes can be used with cages or other external device protection products to obtain a cleaner look.



Audible Visible **Devices**



Horns and Chimes

HR	Horn, Red
HW	Horn, White
CHR	Chime, Red
CHW	Chime, White
HRK ²	Outdoor Horn, Red
MHR	Mini-Horn, Red
MHW	Mini-Horn, White

Wall Strobes

SR ¹	Strobe, Standard Candela, Red
SRH	Strobe, High Candela, Red
SW	Strobe, Standard Candela, White
SWH	Strobe, High Candela, White
SRK ²	Outdoor Strobe, Standard Candela, Red
SRHK ²	Outdoor Strobe, High Candela, Red
SWK ²	Outdoor Strobe, Standard Candela, White
SWHK ²	Outdoor Strobe, High Candela, White

Wall Horn Strobes and Chime Strobes

P2R ¹	2-Wire Horn Strobe, Standard Candela, Red
P2RH	2-Wire Horn Strobe, High Candela, Red
P2W	2-Wire Horn Strobe, Standard Candela, White
P2WH	2-Wire Horn Strobe, High Candela, White
P4R	4-Wire Horn Strobe, Standard Candela, Red
P4RH	4-Wire Horn Strobe, High Candela, Red
P4W ¹	4-Wire Horn Strobe, Standard Candela, White
CHSR	2-Wire Chime Strobe, Standard Candela, Red
CHSW	2-Wire Chime Strobe, Standard Candela, White
P2RK ²	2-Wire Outdoor Horn Strobe, Standard Candela, Red
P2RHK ²	2-Wire Outdoor Horn Strobe, High Candela, Red
P2WK ²	2-Wire Outdoor Horn Strobe, Standard Candela, White
P2WHK ²	2-Wire Outdoor Horn Strobe, High Candela, White
P2RHK-120	2-Wire Outdoor Horn Strobe, High Candela, 120 V, Red
P4RK ²	4-Wire Outdoor Horn Strobe, Standard Candela, Red
P4WK	4-Wire Outdoor Horn Strobe, Standard Candela, White

Notes:

1. Add "-SP" to model number for "FUEGO" marking on cover, e.g., SR-SP.

2. Add "-R" to model number for replacement outdoor unit, ships minus plastic weatherproof back box,

e.g., SRK-R. All -R outdoor replacement models are meant only for use with the WTP series of weatherproof flush-mount plates.

All models ending in "K" include a plastic weatherproof back box.

"Standard candela" refers to strobes that include 15, 15/75, 30, 75, 95, 110, and 115 candela settings.

"High candela" refers to strobes that include 135, 150, 177, and 185 candela settings.



Ceiling Strobes

SCR	Strobe, Standard Candela, Red
SCRH	Strobe, High Candela, Red
SCW	Strobe, Standard Candela, White
SCWH	Strobe, High Candela, White
SCRK	Outdoor Strobe, Standard Candela, Red
SCRHK	Outdoor Strobe, High Candela, Red
SCWK	Outdoor Strobe, Standard Candela, White
SCWHK	Outdoor Strobe, High Candela, White



Ceiling Horn Strobes

PC2R	2-Wire Horn Strobe, Standard Candela, Red
PC2RH	2-Wire Horn Strobe, High Candela, Red
PC2W'	2-Wire Horn Strobe, Standard Candela, White
PC2WH	2-Wire Horn Strobe, High Candela, White
PC4R	4-Wire Horn Strobe, Standard Candela, Red
PC4RH	4-Wire Horn Strobe, High Candela, Red
PC4W	4-Wire Horn Strobe, Standard Candela, White
PC2RK	2-Wire Outdoor Horn Strobe, Standard Candela, Red
PC2RHK	2-Wire Outdoor Horn Strobe, High Candela, Red
PC2WK	2-Wire Outdoor Horn Strobe, Standard Candela, White
PC2WHK	2-Wire Outdoor Horn Strobe, High Candela, White
PC4WK	4-Wire Outdoor Horn Strobe, Standard Candela, White
PC4WHK	4-Wire Outdoor Horn Strobe, High Candela, White

Horns, Strobes and Horn Strobes

The SpectrAlert® Advance series offers the most versatile and easy-to-use line of horns, strobes, and horn strobes in the industry. With white and red plastic housings, wall and ceiling mounting options, and plain and FIRE-printed devices, SpectrAlert Advance can meet virtually any application requirement.

Horns, strobes, and horn strobes include features that increase their application versatility and simplify installation. For example, plug-in designs with minimal intrusion into the back box make installations fast and foolproof and virtually eliminate costly and time-consuming ground faults. Furthermore, a universal mounting plate with an onboard shorting spring tests wiring continuity before the device is installed. Field-selectable candela settings, automatic selection of 12- or 24-volt operation, and a rotary switch for horn tones with three volume selections enable installers to easily adapt devices to suit a wide range of application requirements.

Chimes and Chime Strobes

SpectrAlert Advance selectable-output chimes and chime strobes are private mode notification appliances used to alert trained personnel to investigate possible emergency situations and to take appropriate action. Security guard and nurse workstations are ideal locations for chime products.

Like all SpectrAlert Advance devices, chimes and chime strobes include features that are guaranteed to cut installation times, including plug-in designs, instant feedback messages to ensure correct installation of individual devices, and seven field-selectable candela settings for chime strobes.

Audible Visible **Devices** (cont.)



Wall Speakers

SPR	Speaker, Red
SPRV	Speaker, High dB, Red
SPW	Speaker, White
SPWW	Speaker, High dB, White
SPWK ²	Outdoor Speaker, White
SPRK ²	Outdoor Speaker, Red

Wall Speaker Strobes

SPSW ¹	Speaker Strobe, Standard Candela, White
SPSR ¹	Speaker Strobe, Standard Candela, Red
SPSWH ¹	Speaker Strobe, High Candela, White
SPSRH ¹	Speaker Strobe, High Candela, Red
SPSWV ¹	Speaker Strobe, Standard Candela, High dB, White
SPSRV ¹	Speaker Strobe, Standard Candela, High dB, Red
SPSWK ^{1,2}	Outdoor Speaker Strobe, Standard Candela, White
SPSRK ^{1,2}	Outdoor Speaker Strobe, Standard Candela, Red
SPSRHK	Outdoor Speaker Strobe, High Candela, Red

Ceiling Speakers

SPCW	Speaker, White
SPCR	Speaker, Red
SPCWW	Speaker, High dB, White
SPCRV	Speaker, High dB, Red
SPCWK	Outdoor Speaker, White

Notes:

1. Add "-SP" to model number for "FUEGO" marking on cover, e.g., SR-SP.

2. Add "-R" to model number for replacement outdoor unit, ships minus plastic weatherproof back box,

e.g., SRK-R. All -R outdoor replacement models are meant only for use with the WTP series of weatherproof flush-mount plates.

All models ending in "K" include a plastic weatherproof back box.

"Standard candela" refers to strobes that include 15, 15/75, 30, 75, 95, 110, and 115 candela settings.

"High candela" refers to strobes that include 135, 150, 177, and 185 candela settings.



Ceiling Speaker Strobes

SPSCW'	Speaker Strobe, Standard Candela, White
SPSCR	Speaker Strobe, Standard Candela, Red
SPSCWH'	Speaker Strobe, High Candela, White
SPSCRH	Speaker Strobe, High Candela, Red
SPSCWV'	Speaker Strobe, Standard Candela, High dB, White
SPSCRV	Speaker Strobe, Standard Candela, High dB, Red
SPSCWVH'	Speaker Strobe, High Candela, High dB, White
SPSCRVH	Speaker Strobe, High Candela, High dB, Red
SPSCWK	Outdoor Speaker Strobe, Standard Candela, White
SPSCWHK	Outdoor Speaker Strobe, High Candela, White



ExitPoint™ Sounder

PF24V	Directional Sounder with Voice Messaging, White
-------	---

Speakers and Speaker Strobes

During an emergency, building occupants need to quickly understand what is happening and what actions they need to take. SpectrAlert® Advance speakers (SP high fidelity or SPV high volume) transmit the clear, intelligible messages necessary to meet code, save lives and protect property.

Like all SpectrAlert Advance devices, indoor, outdoor, wall, and ceiling speakers and speaker strobes provide a plug-in design that speeds installation and virtually eliminates costly ground faults. Field-selectable candela settings and 12- and 24-volt options make a single device easily adaptable to a wide range of applications, simplifying inventory, specification, and installation.

ExitPoint Voice Evacuation

Our ExitPoint Directional Sounder with Voice Messaging is a unique product that uses broadband sound to lead building occupants to the nearest, safest exit – even in low to no visibility. This device has been shown to improve evacuation times up to 75 percent.

Audible Visible **Devices** (cont.)



Alert Devices

SW-ALERT	Strobe, Standard Candela, Amber Lens, White
SWH-ALERT	Strobe, High Candela, Amber Lens, White
SPSW-ALERT	Speaker Strobe, Standard Candela, Amber Lens, White
SW-CLR-ALERT	Strobe, Standard Candela, Clear Lens, White
SPSW-CLR-ALERT	Speaker Strobe, Standard Candela, Clear Lens, White
SPSWK-CLR-ALERT	Outdoor Speaker Strobe, Standard Candela, Clear Lens, White
SPSCW-CLR-ALERT	Speaker Strobe, Standard Candela, Clear Lens, White
SPSCWK-CLR-ALERT	Outdoor Speaker Strobe, Standard Candela, Clear Lens, White
SCW-CLR-ALERT	Strobe, Standard Candela, Clear Lens, White
SEP-SPSW	Speaker Strobe Expander Plate, Standard Candela, White
SEP-SW	Strobe Expander Plate, Standard Candela, White

Plain Ceiling and Wall Strobes

SR-P	Strobe, Standard Candela, Clear Lens, Red
SRH-P	Strobe, High Candela, Clear Lens, Red
SW-P	Strobe, Standard Candela, Clear Lens, White
SWH-P	Strobe, High Candela, Clear Lens, White
SRK-P	Strobe, Standard Candela, Clear Lens, Outdoor, Red
SRHK-P	Strobe, High Candela, Clear Lens, Outdoor, Red
SWK-P	Strobe, Standard Candela, Clear Lens, Outdoor, White
SWHK-P	Strobe, High Candela, Clear Lens, Outdoor, White
SCW-P	Strobe, Standard Candela, Clear Lens, White

Plain Ceiling and Wall Horn Strobes

P2R-P	Horn Strobe, Standard Candela, Clear Lens, Red
P2W-P	Horn Strobe, Standard Candela, Clear Lens, White
P2WH-P	Horn Strobe, High Candela, Clear Lens, White
P2RK-P	Horn Strobe, Standard Candela, Clear Lens, Outdoor, Red
P2RHK-P	Horn Strobe, High Candela, Clear Lens, Outdoor, Red
P2WK-P	Horn Strobe, Standard Candela, Clear Lens, Outdoor, White
P2WHK-P	Horn Strobe, High Candela, Clear Lens, Outdoor, White
PC2R-P	Horn Strobe, Standard Candela, Clear Lens, Red
PC2W-P	Horn Strobe, Standard Candela, Clear Lens, White
PC2WH-P	Horn Strobe, High Candela, Clear Lens, White
P4W-P	Horn Strobe, Standard Candela, Clear Lens, White



Plain Wall Speaker Strobes

SPSR-P	Speaker Strobe, Standard Candela, Clear Lens, Red
SPSW-P	Speaker Strobe, Standard Candela, Clear Lens, White
SPSRH-P	Speaker Strobe, High Candela, Clear Lens, Red
SPSWH-P	Speaker Strobe, High Candela, Clear Lens, White
SPSRV-P	Speaker Strobe, Standard Candela, High Volume, Clear Lens, Red
SPSWV-P	Speaker Strobe, Standard Candela, High Volume, Clear Lens, White
SPSRK-P	Speaker Strobe, Standard Candela, Clear Lens, Outdoor, Red
SPSWK-P	Speaker Strobe, Standard Candela, Clear Lens, Outdoor, White



Plain Ceiling Speaker Strobes

SPSCW-P	Speaker Strobe, Standard Candela, Clear Lens, White
SPSCWH-P	Speaker Strobe, High Candela, Clear Lens, White
SPSCWHK-P	Outdoor Speaker Strobe, High Candela, Clear Lens, White
SPSCWV-P	Speaker Strobe, High Volume, Clear Lens, White
SPSCWVH-P	Speaker Strobe, High Candela, High Volume, Clear Lens, White

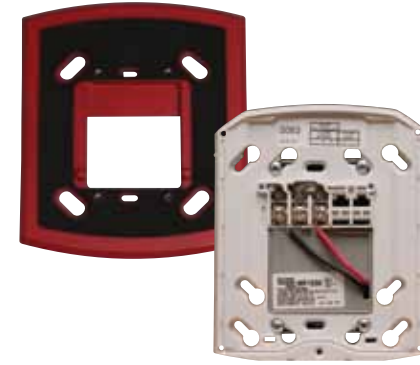
Emergency Communications Systems

SpectrAlert® Advance emergency communications devices and accessories combine application versatility with all the time- and money-saving benefits of the entire SpectrAlert Advance line.

ALERT-printed on white housings, SW-ALERT, SWH-ALERT, and SPSW-ALERT amber lens strobes and speaker strobes provide visual signaling for mass notification in compliance with ANSI/UL 1638 – Standard for General Signaling Visible Appliances. Other ALERT-printed models provide clear lenses for use with color lens strobe attachments (amber, blue, green, and red) that easily attach to strobe and speaker strobe devices without a candela derating.

SpectrAlert Advance also includes plain (non-printed) strobes, horn strobes, and speaker strobes.

Audible Visible **Accessories**



Back Boxes

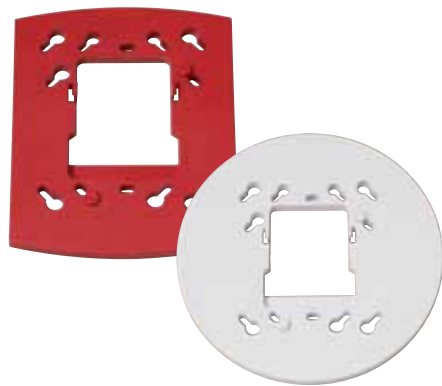
For Use with Horn, Strobe and Horn Strobe Devices	
SA-WBB	Wall-Mount, Metal Weatherproof Back Box, Red
SA-WBBW	Wall-Mount, Metal Weatherproof Back Box, White
SA-WBBCW	Ceiling-Mount, Metal Weatherproof Back Box, White
For Use with Speaker and Speaker Strobe Devices	
MWBB	Wall-Mount, Metal Weatherproof Back Box, Red
MWBBW	Wall-Mount, Metal Weatherproof Back Box, White
MWBBCW	Ceiling-Mount, Metal Weatherproof Back Box, White

Back Box Skirts

For Use with Horn, Strobe and Horn Strobe Devices	
BBS-2	Wall-Mount, Back Box Skirt, Red
BBSW-2	Wall-Mount, Back Box Skirt, White
BBSC-2	Ceiling-Mount, Back Box Skirt, Red
BBSCW-2	Ceiling-Mount, Back Box Skirt, White
SEP-BBSW	Strobe Expander Plate Back Box Skirt, White
For Use with Speaker and Speaker Strobe Devices	
SPBBS	Wall-Mount, Back Box Skirt, Red
SPBBSW	Wall-Mount, Back Box Skirt, White
SPBBSC	Ceiling-Mount, Back Box Skirt, Red
SPBBSCW	Ceiling-Mount, Back Box Skirt, White
SPSEP-BBSW	Speaker Strobe Expander Plate Back Box Skirt, White
For Use with ExitPoint™ Directional Sounder with Voice Messaging	
BBS-SP201W	Wall-Mount, Back Box Skirt, White

Modules and Plates

Sync Modules	
MDL3R	12/24 Volt Sync-Circuit Module, Red
MDL3W	12/24 Volt Sync-Circuit Module, White
Retrofit Plates (For Use with Horn, Strobe and Speaker Strobe Devices)	
RFP	9.5 in. x 7 in. Retrofit Plate, Red
RFPW	9.5 in. x 7 in. Retrofit Plate, White
Mounting Plate	
MP120K	120 VAC Adapter Mounting Plate
Weatherproof Plates (For Use with Horn, Strobe and Horn Strobe Devices)	
WTP	Outdoor, Red
WTPW	Outdoor, White
Weatherproof Plates (For Use with Speaker and Speaker Strobe Devices)	
WTP-SP	Outdoor, Red
WTP-SPW	Outdoor, White



Trim Rings

Trim Rings (For Use with Horn, Strobe and Horn Strobe Devices)

TRC-HS	Ceiling-Mount, Red
TRCW-HS	Ceiling-Mount, Red
TR-HS	Wall-Mount, Red
TRW-HS	Wall-Mount, White

Trim Rings (For Use with Speaker and Speaker Strobe Devices)

TR	Wall-Mount, Red
TRC	Ceiling-Mount, Red
TRCW	Ceiling-Mount, White
TRW	Wall-Mount, White



Colored Lenses and Decals

Colored Lenses

(For Use with Plain (Non-FIRE) Indoor and Outdoor Strobe Devices)

LENS-A	Wall-Mount, Amber
LENS-AC	Ceiling-Mount, Amber
LENS-B	Wall-Mount, Blue
LENS-BC	Ceiling-Mount, Blue
LENS-G	Wall-Mount, Green
LENS-GC	Ceiling-Mount, Green
LENS-R	Wall-Mount, Red
LENS-RC	Ceiling-Mount, Red

Decals (For Use with Non-Pad-Printed Devices)

DECAL-R	For Wall-Mount Devices (10 Total Decals Per Box for 5 Devices), Red
DECAL-RC	For Ceiling-Mount Devices (15 Total Decals Per Box for 5 Devices), Red
DECAL-W	For Wall-Mount Devices (10 Total Decals Per Box for 5 Devices), White
DECAL-WC	For Ceiling-Mount Devices (15 Total Decals Per Box for 5 Devices), White

Note:

*All decals include labels: "AGENT, EVAC, ALERT and FIRE"

Accessories

SpectrAlert® Advance provides a variety of accessories that make a single device easily adaptable to a wide range of applications.

Color lens attachments come in amber, blue, green, and red and easily attach to any SpectrAlert Advance strobe device for non-fire applications – with no candela derating. Retrofit plates increase the versatility of SpectrAlert Advance appliances by covering the footprint of previously installed devices. Trim rings provide an additional half-inch clearance in the back box for speaker applications and allow the 4-wire horn strobe to mount to a single-gang back box. Back box skirts cover surface-mounted back boxes of indoor installations to provide a finished look.

Specifications and Ratings

UL Max. Strobe Current Draw (mA RMS)

	Candela	8-17.5 Volts		16-33 Volts	
		DC	FWR	DC	FWR
Standard Candela Range	15	123	128	66	71
	15/75	142	148	77	81
	30	NA	NA	94	96
	75	NA	NA	158	153
	95	NA	NA	181	176
	110	NA	NA	202	195
High Candela Range	115	NA	NA	210	205
	135	NA	NA	228	207
	150	NA	NA	246	220
	177	NA	NA	281	251
	185	NA	NA	286	258

UL Max. Horn Current Draw (mA RMS)

Sound Pattern	dB	8-17.5 Volts		16-33 Volts	
		DC	FWR	DC	FWR
Temporal	High	57	55	69	75
Temporal	Medium	44	49	58	69
Temporal	Low	38	44	44	48
Non-Temporal	High	57	56	69	75
Non-Temporal	Medium	42	50	60	69
Non-Temporal	Low	41	44	50	50
Coded	High	57	55	69	75
Coded	Medium	44	51	56	69
Coded	Low	40	46	52	50

UL Max. Chime Current Draw (mA RMS)

Sound Pattern	dB	8-17.5 Volts		16-33 Volts	
		DC	FWR	DC	FWR
1 Second Chime	High	34	50	58	51
1 Second Chime	Low	30	51	51	54
¼ Second Chime	High	34	51	50	50
¼ Second Chime	Low	31	51	50	52
Temporal Chime	High	30	50	48	54
Temporal Chime	Low	30	47	50	51
5 Second Whoop	High	32	52	34	54
5 Second Whoop	Low	30	40	34	52
One Test Chime/ coded	High	48	49	50	50

UL Max. Mini-Horn Current Draw (mA RMS)

Sound Pattern	Volume	8-17.5 Volts		16-33 Volts	
		DC	FWR	DC	FWR
Temporal	High	12	10	17	15
Temporal	Low	10	9	14	13
Non-Temporal	High	22	17	29	25
Non-Temporal	Low	17	13	21	19

Candela Measurements, Amber Lens Strobe

	Candela	On-Axis Rating (UL 1638)	Equivalent Rating for UL 1971 Profile*
Standard Candela Range	15	15	12
	15/75	15/75	15/75
	30	30	24
	75	75	60
	95	95	75
	110	110	85
High Candela Range	115	115	90
	135	135	110
	150	150	120
	177	177	140
	185	185	150

*UL 1971 is not applicable to mass notification or emergency communications system devices. These readings were obtained using the measurement procedure specified under UL 1971.

Mini-Horn Output (dBA)

Pattern	Output Level	8-17.5 VDC	8-17.5 VFWR	Nominal 12 VDC	Nominal 12 VFWR	16-33 VDC	16-33 VFWR
Temporal	High	68	67	71	70	78	76
Temporal	Low	66	65	69	68	76	75
Continuous	High	72	71	75	74	80	79
Continuous	Low	70	69	73	72	78	77

Indoor Speaker Sound Output

UL Reverberant (dBA @ 10 ft.)	2 W	1 W	½ W	¼ W
Wall-Mount SP Series	86	84	81	78
Wall-Mount SPV Series	90	88	85	81
Ceiling-Mount SPC Series	86	83	80	77
Ceiling-Mount SPCV Series	90	88	85	81

Outdoor Speaker Sound Output

UL Reverberant (dBA @ 10 ft.)	2 W	1 W	½ W	¼ W
Wall-Mount Series	90	88	85	81
Ceiling-Mount Series	90	88	85	81

Rotary Horn and Horn Strobe Switch Settings

Setting	Repetition Rate	dB Level
1	Temporal Horn	High
2	Temporal Horn	Medium
3	Temporal Horn	Low
4	Normal Horn	High
5	Normal Horn	Medium
6	Normal Horn	Low
7*	Externally Coded	High
8*	Externally Coded	Medium
9*	Externally Coded	Low

*Horn and 4-wire horn strobe only.

ExitPoint™ Current Draw Measurements
and Sound Output Guide

Speed	DIP Switch Selection	Power Setting	Speed Selection	Maximum DC Operating Current (mA RMS) (16 to 33 V)	Audibility (dBA) (16 to 33 V) Note 1	Audibility (dBA) (16 to 33 V) Note 2
Fast (Exit)	10	High	185	84	75	
Fast (Exit)	10	Med-High	131	81	72	
Fast (Exit)	10	Med	78	78	69	
Fast (Exit)	10	Med-Low	76	75	66	
Fast (Exit)	10	Low	64	72	63	
Med-Fast	9	High	170	83	74	
Med-Fast	9	Med-High	124	80	71	
Med-Fast	9	Med	75	77	68	
Med-Fast	9	Med-Low	73	74	65	
Med-Fast	9	Low	62	71	62	
Med-Slow	8	High	135	82	73	
Med-Slow	8	Med-High	104	79	70	
Med-Slow	8	Med	67	76	67	
Med-Slow	8	Med-Low	65	73	64	
Med-Slow	8	Low	57	70	61	
Slow	7	High	120	82	72	
Slow	7	Med-High	92	79	69	
Slow	7	Med	62	76	66	
Slow	7	Med-Low	61	73	63	
Slow	7	Low	54	70	60	

Note 1: Sound output measured in anechoic room at 10 feet.

Note 2: Sound output measured in a reverberant room at 10 feet.

UL Max. Current Draw (mA RMS), 2-Wire Horn Strobe, Standard Candela Range (15–115 cd)

DC Input	8–17.5 Volts		16–33 Volts						
	15	15/75	15	15/75	30	75	95	110	115
Temporal High	137	147	79	90	107	176	194	212	218
Temporal Medium	132	144	69	80	97	157	182	201	210
Temporal Low	132	143	66	77	93	154	179	198	207
Non-Temporal High	141	152	91	100	116	176	201	221	229
Non-Temporal Medium	133	145	75	85	102	163	187	207	216
Non-Temporal Low	131	144	68	79	96	156	182	201	210
FWR Input									
Temporal High	136	155	88	97	112	168	190	210	218
Temporal Medium	129	152	78	88	103	160	184	202	206
Temporal Low	129	151	76	86	101	160	184	194	201
Non-Temporal High	142	161	103	112	126	181	203	221	229
Non-Temporal Medium	134	155	85	95	110	166	189	208	216
Non-Temporal Low	132	154	80	90	105	161	184	202	211

UL Max. Current Draw (mA RMS), 2-Wire Horn Strobe, High Candela Range (135–185 cd)

DC Input	16–33 Volts				FWR Input	16–33 Volts			
	135	150	177	185		135	150	177	185
Temporal High	245	259	290	297	Temporal High	215	231	258	265
Temporal Medium	235	253	288	297	Temporal Medium	209	224	250	258
Temporal Low	232	251	282	292	Temporal Low	207	221	248	256
Non-Temporal High	255	270	303	309	Non-Temporal High	233	248	275	281
Non-Temporal Medium	242	259	293	299	Non-Temporal Medium	219	232	262	267
Non-Temporal Low	238	254	291	295	Non-Temporal Low	214	229	256	262

Horn Output (dBA) in UL Reverberant Room

Switch Position	Sound Pattern	dB	8–17.5 Volts**		16–33 Volts**		24 Volt Nominal Measurements			
			DC	FWR	DC	FWR	Reverberant		Anechoic	
							DC	FWR	DC	FWR
1	Temporal	High	78	78	84	84	88	88	99	98
2	Temporal	Medium	74	74	80	80	86	86	96	96
3	Temporal	Low	71	73	76	76	83	80	94	89
4	Non-Temporal	High	82	82	88	88	93	92	100	100
5	Non-Temporal	Medium	78	78	85	85	90	90	98	98
6	Non-Temporal	Low	75	75	81	81	88	84	96	92
7*	Coded	High	82	82	88	88	93	92	101	101
8*	Coded	Medium	78	78	85	85	90	90	97	98
9*	Coded	Low	75	75	81	81	88	85	96	92

*Horn & 4-wire Horn Strobe only.

**Minimum dB rating for Operational Voltage Range per UL 464.

Specifications

Standard Operating Temperature

32°F to 120°F (0°C to 49°C)

K Series Operating Temperature

–40°F to 151°F (–40°C to 66°C)

Humidity Range

10% to 93% non-condensing (indoor products)

Strobe Flash Rate

1 flash per second

Nominal Voltage

Regulated 12 DC/FWR or regulated 24 DC/FWR¹

Operating Voltage Range²

8 V to 17.5 V (12 V nominal) or 16 V to 33 V (24 V nominal)

Input Terminal Wire Gauge

12 AWG to 18 AWG

Ceiling-Mount Dimensions (including lens)

6.8 in Dia. × 2.5 in H (173 mm Dia. × 64 mm H)

Wall-Mount Dimensions (including lens)

5.6 in L × 4.7 in W × 2.5 in D
(142 mm L × 119 mm W × 64 mm D)

Horn Dimensions

5.6 in L × 4.7 in W × 1.3 in D
(142 mm L × 119 mm W × 33 mm D)

Mini-Horn Dimensions

4.6 in L × 2.9 in W × .45 in D
(117 mm L × 74 mm W × 11.5 mm D)

Wall Back Box Skirt Dimensions

5.1 in L × 6.0 in W × 2.25 in D
(130 mm L × 152 mm W × 57 mm D)

Ceiling Back Box Skirt Dimensions

7.1 in Dia. × 2.25 in H (180 mm Dia. × 57 mm H)

Wall Weatherproof Back Box Dimensions

5.7 in L × 5.1 in W × 2.0 in D
(145 mm L × 130 mm W × 51 mm D)

Ceiling Weatherproof Back Box Dimensions

7.1 in Dia. × 2.0 in H (180 mm Dia. × 51 mm H)

Notes:

1. Full Wave Rectified (FWR) voltage is an unfiltered, time-varying power source that is used on some power supply and panel outputs.
2. P, S, PC, and SC products will operate at 12 V nominal only for 15 and 15/75 cd.
3. To calculate current draw for 4-wire horn strobes, combine horn and strobe current draws from the tables at left.

SpectrAlert® Advance Audible Visible **Full-Line Catalog**

